

Chrome Enterprise Bundle

Set up and deploy Chrome browser in your organization

The Chrome Enterprise Bundle is a single downloadable package that contains all of the components you need to successfully deploy Chrome in your enterprise. This bundle allows you to access all of the tools you need to deploy the Chrome browser in one place.

What's included with this bundle (Note: Separate bundles for 32/64bit are [available here](#).)

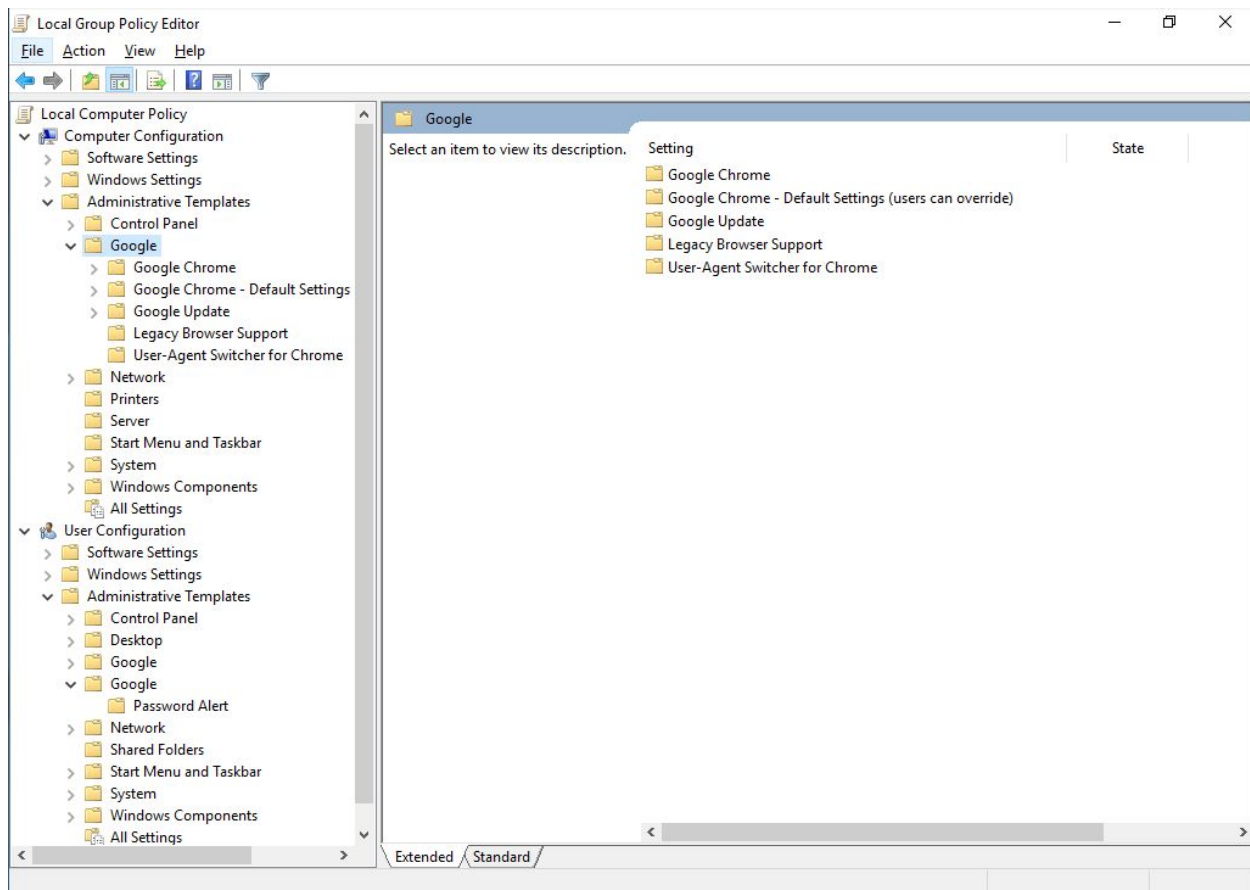
Component	Description	Filename
Chrome MSI	Chrome Enterprise MSI installation package (32/64-Bit).	[64-bit] GoogleChromeStandAloneEnterprise64.msi [32-bit] GoogleChromeStandAloneEnterprise.msi
Chrome Master Preferences	Master Preferences controls the 'first run' experience. Settings/controls can be changed by the user if configured via this method	/Configuration/Master_Preferences
Chrome Group Policy Templates	This is the template needed to configure the 200+ policies available for IT admins	/Configuration/adm/LANGUAGE/chrome.adm /Configuration/admx/chrome.admx
Legacy Browser Support MSI	Allows users to access legacy web applications by automatically switching between Chrome and a third-party browser required to run the legacy web apps.	[64-bit] /Installers/LegacyBrowserSupport_VERSION_en_x64.msi [32-bit] /Installers/LegacyBrowserSupport_VERSION_en.msi
Legacy Browser Support Group Policy Templates	You can specify which URLs to launch into a second browser and deploy this Chrome policy for the organization.	/Configuration/admx/LegacyBrowserSupport.admx

Google Update Group Policy Template*	Use one of these templates to control Chrome Updates	/Configuration/admx/GoogleUpdate.admx /Configuration/adm/GoogleUpdate.adm
Google Common Template	This ADMX template merges the LBS, Google Update, and Chrome GPO templates into a single folder within gpedit.msc	/Configuration/admx/chrome.admx /Configuration/admx/google.admx /Configuration/admx/GoogleUpdate.admx /Configuration/admx/LegacyBrowserSupport.admx
User-Agent Switcher	The User-Agent Switcher extension for Chrome spoofs and mimics user-agent strings. Learn more	/Configuration/admx/ChromeUASwitcher.admx
Password Alert	When a user enters their Google password on a non-Google site, this extension alerts the user and admin. Learn more	/Configuration/admx>PasswordAlert.admx
Mac OS - Plist file	This sample plist file allows you to configure Chrome policies with your Mac management tool of choice. Learn more	/Configuration/com.google.Chrome.plist
Endpoint Verification	You can monitor and see details about user devices running Chrome OS or Chrome Browser that access your organization's data. Learn more	EndpointVerification.msi

**Warning: Do not deploy both ADM and ADMX templates. ADMX is preferred.*

What you can do with this bundle:

- [Deploy Chrome MSI](#) Package to Windows Desktops
- [Deploy Legacy Browser Support](#), which allows you seamless access to your legacy web apps
- Configure plist file to manage Chrome on Mac computers
- Configure policies in one place for:
 - Chrome
 - Google Update
 - Legacy Browser Support
 - User-Agent Switcher
 - Password Alert



Chrome Enterprise Bundle folders in the Windows Group Policy Editor

How to deploy the templates on Windows

Warning: Do not deploy both ADM/ADMX templates. ADMX is preferred.

1. Copy all required/desired ADMX files from /Configuration/admx to C:\windows\policydefinitions
2. Copy all the ADML files from /Configuration/admx/<language> to C:\windows\policydefinitions\<language>
3. Start gpedit.msc to see the new policy under the single Google root

Note: There are *four* ADMX files, which apply to all languages. These files are in the admx folder: Chrome, LBS, Google Update, and the Google Common Template. Every AMDX file has a corresponding ADML file, which appears in the language-specific folders.

Legacy Browser Support (LBS)

If you have legacy web applications that require functionality not supported by Chrome (such as a site that requires ActiveX, Java, or Silverlight), you can still deploy Chrome as your default or secondary browser with the support of our Legacy Browser Support tool. It allows you to seamlessly access webpages in both Chrome and another browser. Learn more about [Legacy Browser Support](#).

LBS requires 3 components:

1. The LBS Extension must be [force-installed to your users](#).
2. Deploy the MSI (/Installers/LegacyBrowserSupport_VERSION_en_x64.msi) or (/Installers/LegacyBrowserSupport_VERSION_en.msi).
3. Add the LBS GPO Template & configure the policy to specify which URLs are to be opened in a legacy browser.

Resources

For instructions on how to set up and configure each of the items in the bundle, see:

- [Chrome browser deployment guide](#)
- [Legacy Browser Support help articles](#)
- [Set Chrome as the Default Browser on Windows 10 via GPO](#)

Questions?

- Contact [Google Cloud Support](#).

Last updated: June 11, 2018. Help URL: <https://support.google.com/chrome/a/answer/7358568>